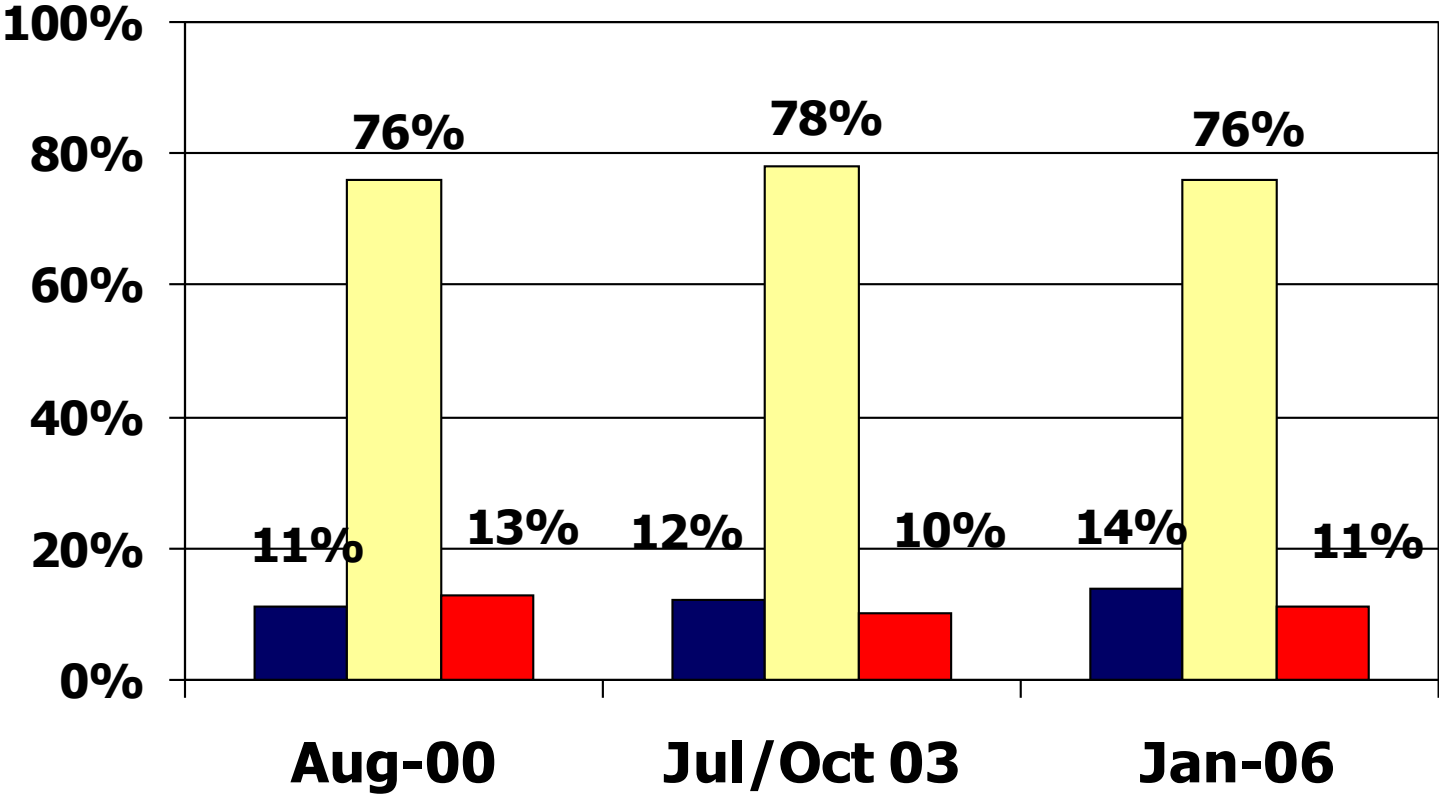


# End of Life Choice

If you had to choose between being kept alive as long as possible... experiencing pain & suffering or living a shorter time to avoid pain...being put on machines, which would you pick?



■ Being kept alive ■ Live shorter/avoid machines ■ Unsure

**30% of Medicare payments each year are for the 6% of Medicare beneficiaries who die in that year.**

Lubitz JD, Riley GF. Trends in Medicare payments in the last year of life. New Engl J Med 1993;328:1092-1096 and Testimony to Congress, 2004.

Payments for the last 60 days of life  
constitute 52% of the payments for  
the last year of life.

Lubitz JD, Riley GF. Trends in Medicare payments in the last year of life.  
New Engl J Med 1993;328:1092-1096 and Testimony to Congress, 2004.

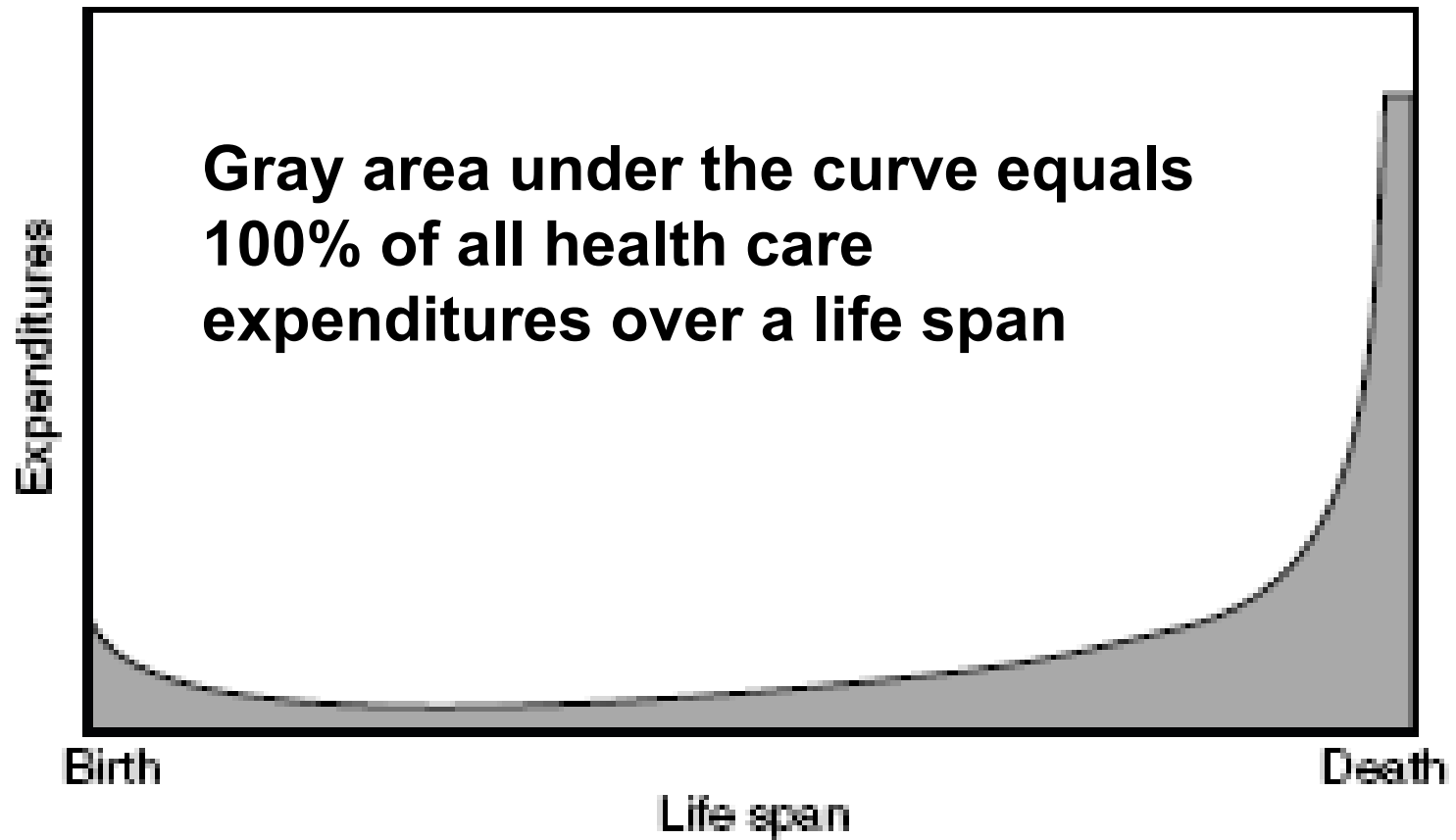
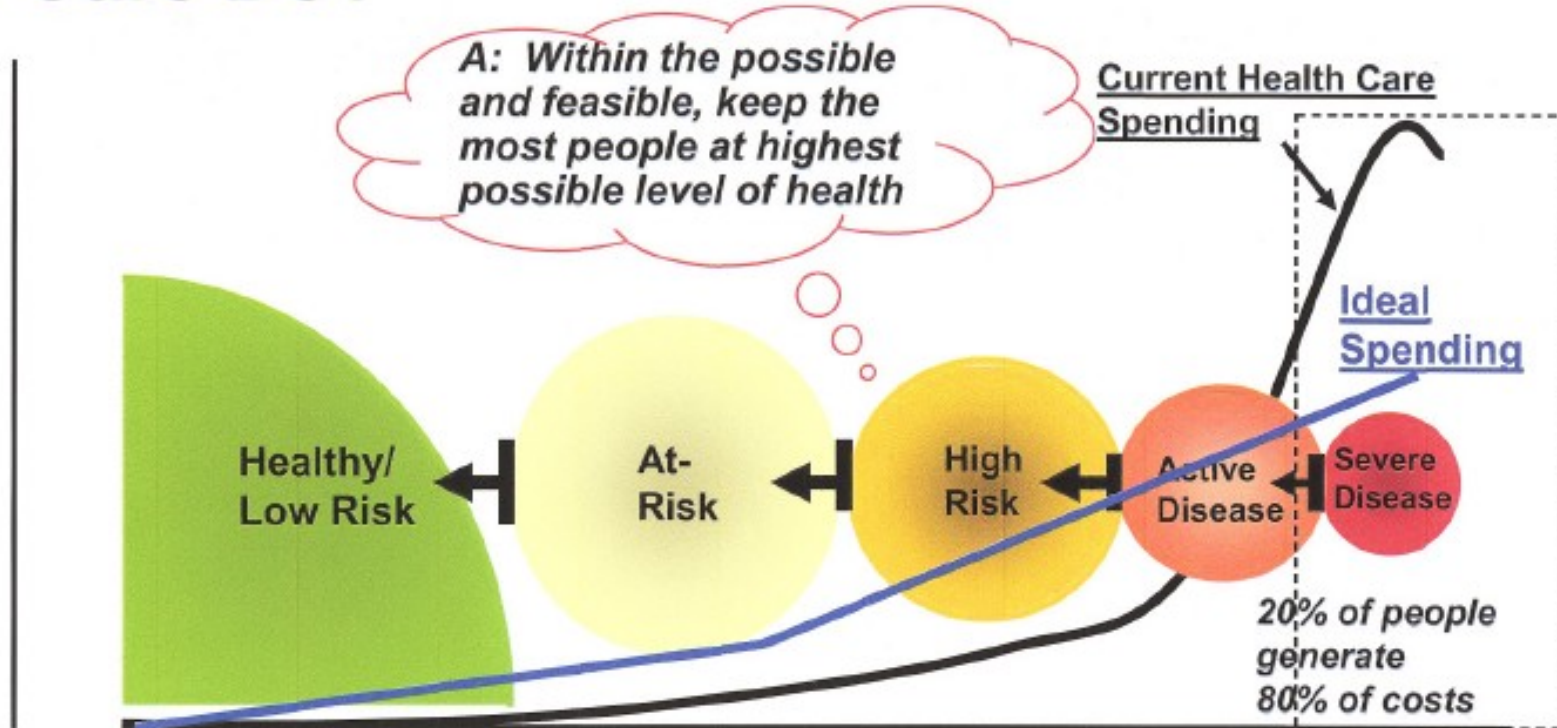


Figure 1. Americans' Current Health Care Expenditures Are Concentrated in the Final Part of the Life Span

# What should a “value based” Health Care Do?



## A value-based health care system

Source: HealthPartners

